

INSTALLATION MANUAL




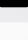



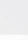


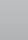
TIS AIR SOCKET Wi-Fi Smart Power Plug

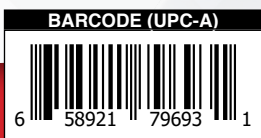
Model: AIR-SOCKET-S



i PRODUCT INFORMATION

Equipped with a built-in Wi-Fi module so that it can connect automatically to the Internet, this device enables you to remotely control your lights and any other electrical appliances that are connected to the power outlet.

PRODUCT SPECIFICATIONS		
 Power supply	Input Voltage Output Power Protection Current consumption	110-230 VAC 50/60 Hz 3W / 12V Built-in protection fuse 20 mA / 12 V DC
 Output	Number of channels Nominal voltage Nominal current per channel	1 110 – 230 V AC 50/60 Hz 10 A / 230 VAC
 Output switching current	Max switching current Max Continues current Max. switching Voltage	16A/230 VAC Resistive 8A/230 VAC Florescent 10A/230 VAC 440VAC / 125VDC
 Output service life	Mechanical Endurance	> 10,000,000 OPS
 Output switching times	Operating time Releasing time Max. operating frequency	15 mS (at nomi. Volt) 8 mS (at nomi. Volt) 20 cycle/min
 TIS AIR	WIFI Signal Protocol Standard	2.4 GHz 802.11 b/g/n
 Socket Type	Optional	Europe, UK, US or Universal type
 Operating and display elements	touch buttons Backlight TIS AIR Upgrading	1 Control Button LED Backlight Indicators TIS Protocol Messages & Commands By WIFI Connection
 Weight	Without packaging	20 g
 Dimensions	Length x Width x Height	62mm x 68mm x 102mm
 Housing	Materials Internal Parts color IP rating	PC fire-proof White IP 50





Read Instructions

We recommend that you read this Instruction Manual before installation.



Mounting Location

Can be installed in any power outlet.



Safety instructions

Electrical equipment should only be installed and fitted by electrically skilled persons. Failure to observe the instructions may cause damage to the device and other hazards. These instructions are an integral part of the product and must remain with the end customer.



Electrical Wires

The installer should adequately consider the total current consumption when connecting any device.



Warranty

We provide a warranty as required by law. A hologram warranty seal and product serial number are provided on each device. Please send the description of the defect with Product S/N to our dealer network.



Programming

This device can be tested and programmed manually. Advanced programming requires TIS Device Search software. Advanced software programming knowledge should be obtained in the advanced training courses.



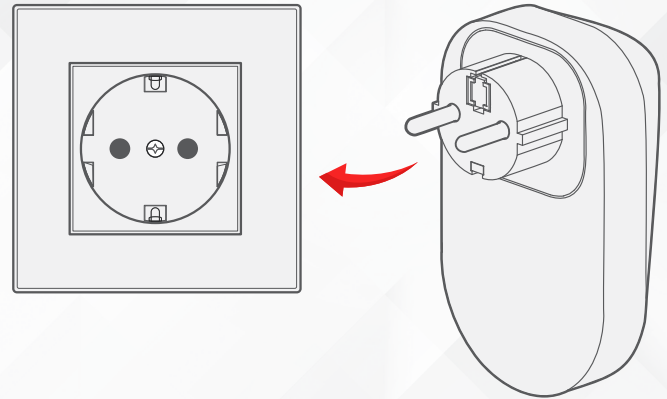
Simple Installation

Just plug it in to the power outlet.



INSTALLATION

➤ Insert TIS AIR Plug in to the wall power outlet.



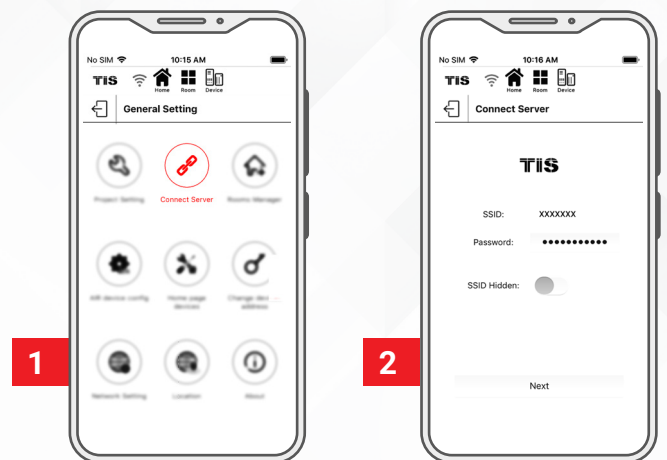
SERVER LINKING

In order for a project to be fully linked to the TIS server, server configuration must be enabled in just 1 product within that project.

If you have already done that with any other panel, just ignore these steps and proceed to configuration steps.

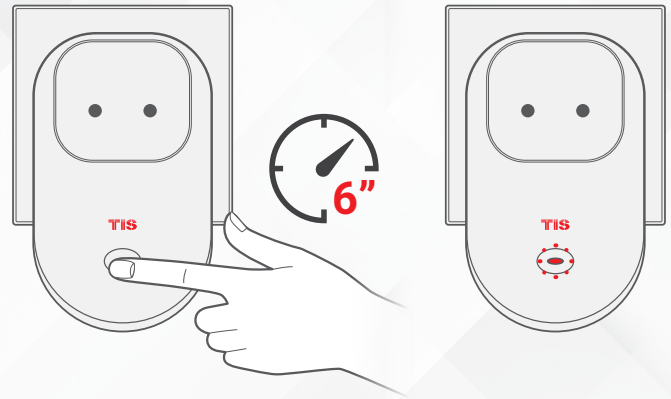
To do the server linking, complete the following steps:

1 ➤ In the TIS App, go to Settings ► Connect Server, and follow the steps by entering your SSID password.



SERVER LINKING

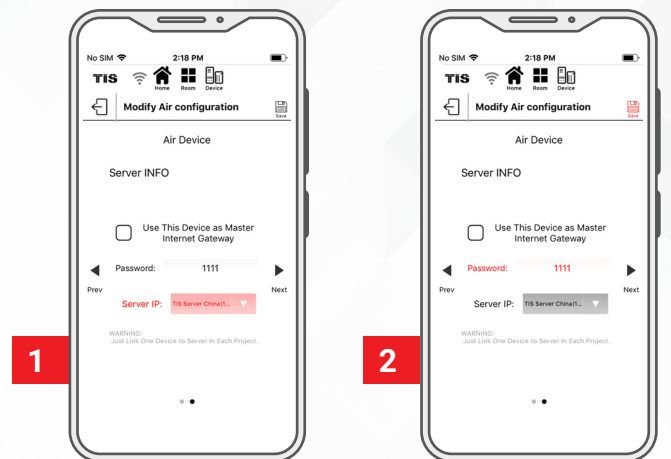
2 On the AIR Plug, press and hold the PRG button for 6 seconds. The button LED will start blinking.



3 On the TIS app, press Search and wait for a few seconds. The plug will link to your Wi-Fi, and the button LED will turn blue.

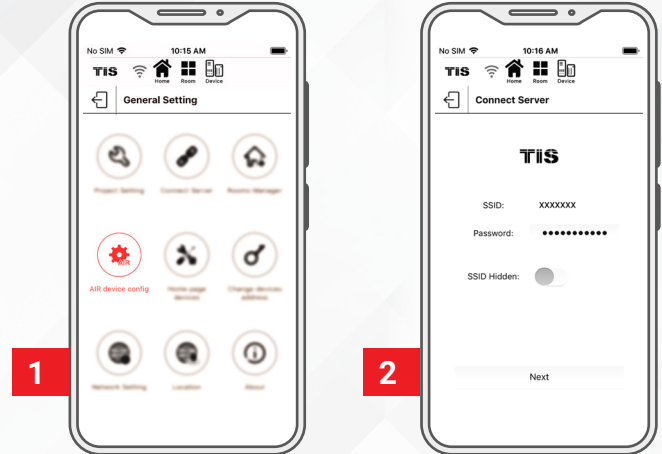


4 Select your server option and 4-digit password. Then, press Save.

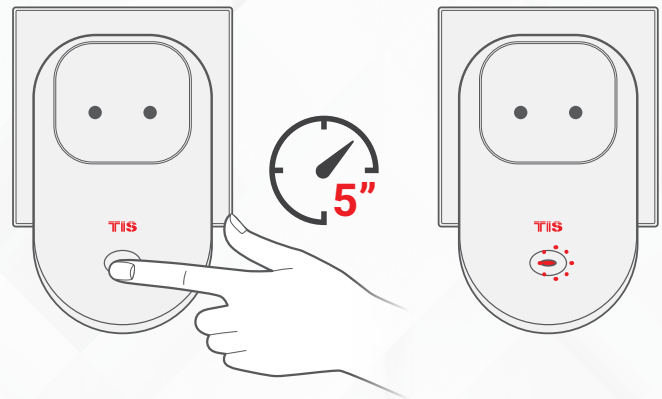


CONFIGURATION STEPS

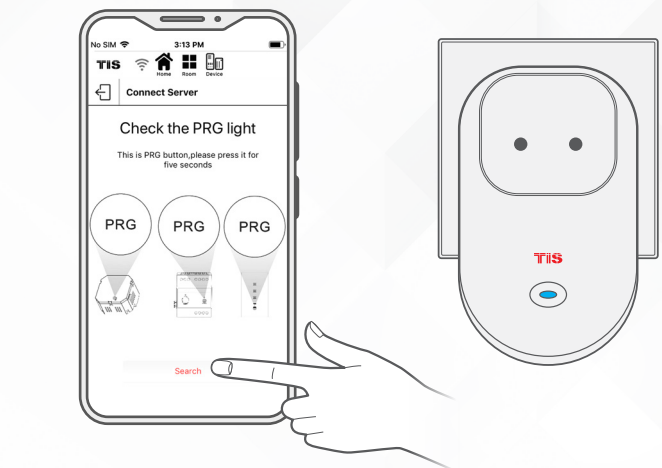
1 In the TIS App, go to the settings and select TIS Air config. Then, enter your SSID password.



2 Press and hold the PRG button on the Air Plug for 5 seconds. Release the button when the red LED flickers.



3 On the TIS app, press search and wait for a few seconds. The AIR Socket will link to your WiFi, and the LED will turn blue.

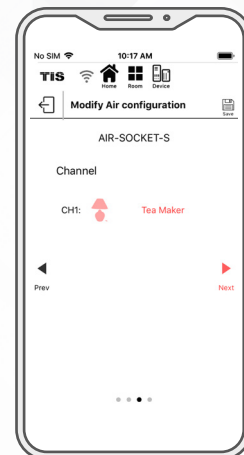
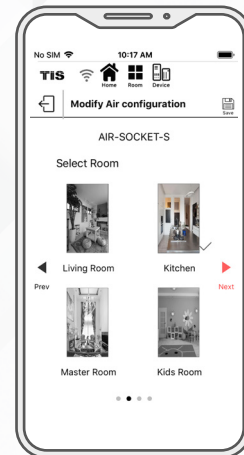


CONFIGURATION STEPS

4 In the TIS App, add comments for your plug.

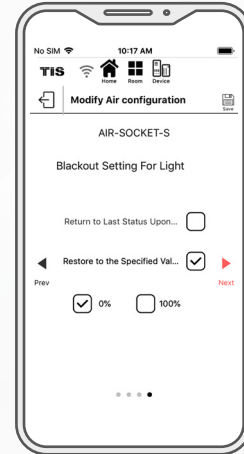



5 Select the room, and then select channel names and icons.

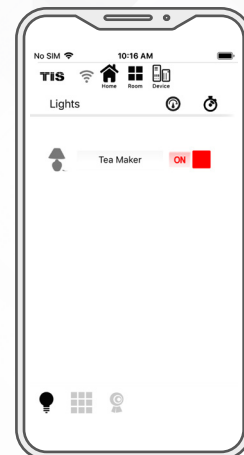
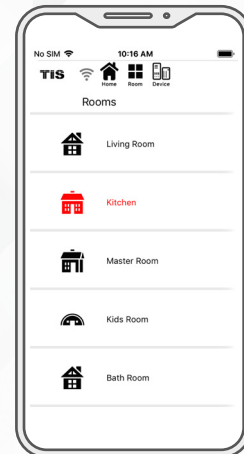


CONFIGURATION STEPS

6  Select the blackout setting that you need.



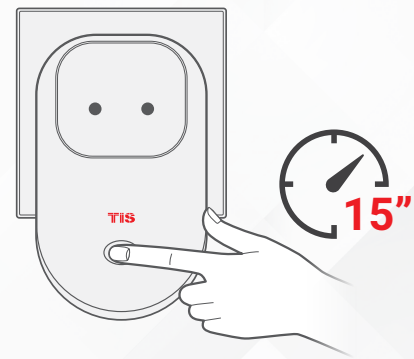
7  Go to the room page, and control your plug from your app.



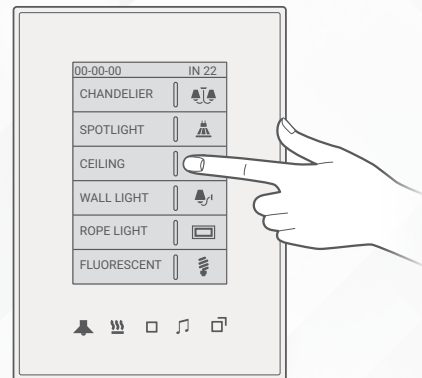
PAIRING (MANUAL PROGRAMMING)

To pair the TIS Air Power Plug with any TIS wall panel buttons, do the following:

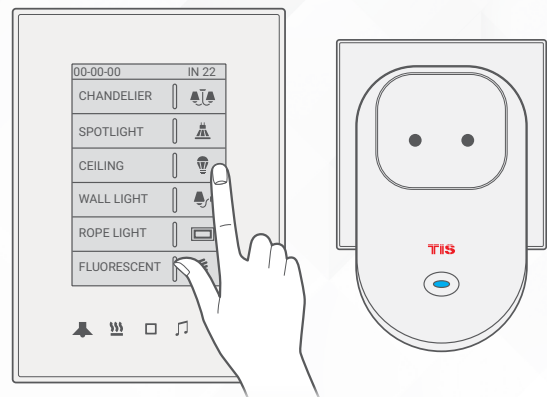
1 Long press the plug's ON/OFF PRG button for 15 seconds until you hear its relay sound starting ON/OFF sequence.



2 Go to your wall panel, and short press on any lighting button.

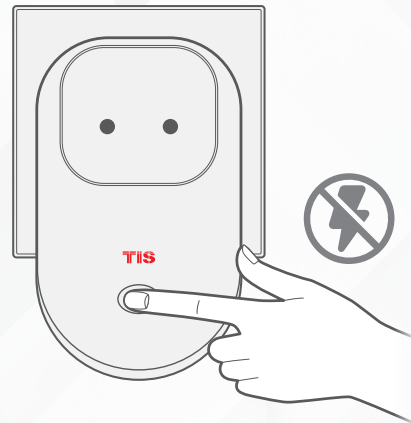
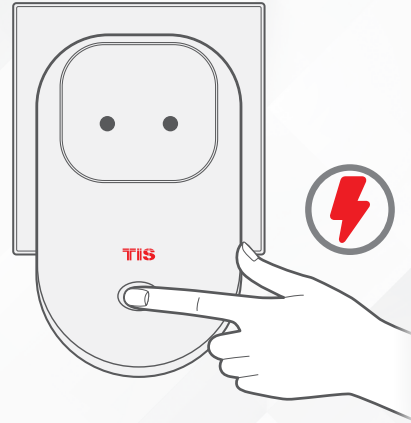


3 Test by pressing the wall panel's ON/OFF button. The AIR Plug relay should respond by turning ON and OFF accordingly.



USER OPERATION

» You can turn your plug power ON/OFF any time by pressing the ON/OFF button.



TROUBLESHOOTING



PRG button blinks purple color rapidly

Reason: The plug address conflicts with another device in the TIS network. You need to press and hold the PRG button for 6 seconds so that the module can get a new address.



Device's PRG LED is RED

Reason 1: The device is not connected to Wi-Fi.



Device cannot link to Wi-Fi router

Reason 1: The device is too far from the Wi-Fi router.

Reason 2: The SSID or password is not correct.

Reason 3: Some setting in the Wi-Fi router is preventing new devices from being added.



Wall panels can't pair with the device

Reason 1: TIS-BUS connection is not linked to the same Wi-Fi network.

Reason 2: The manual programming function is disabled in the device (default is enabled).



Wall panels can't control the device channels

Reason 1: The TIS-BUS connection is not linked to the same Wi-Fi network.

Reason 2: The programming address is wrong.